

CONNECTING THE MID-SOUTH TO THE WORLD

CSX TRANSPORTATION,
CLASS I RAIL PROVIDER

IMPORT AND EXPORT
CARGO

COST-EFFECTIVE
GEOGRAPHIC ADVANTAGE

SERVES FASTEST-GROWING
REGION IN THE U.S.

GPA AND CSX MOVE INTERMODAL CARGO MORE EFFICIENTLY

The Appalachian Regional Port provides a powerful new gateway to global markets.

- The Appalachian Regional Port (ARP) offers an efficient solution to hours of service/ELD supply chain challenges.
- Each round-trip container moved via the ARP will offset 710 truck miles on Georgia highways.
- Offers exclusive CSX service on a direct, 388-mile rail route to/from the Georgia Ports Authority's Garden City Terminal.
- Provides an alternative to an all-truck dray to/from the deepwater Port of Savannah for target markets in Georgia, Alabama, Tennessee and Kentucky.
- Import and export intermodal service available.
- Located in an industrial belt, including the production and export of carpet and flooring, automobiles and tires.
- Sits on 42 acres in Northwest Georgia's Murray County. The site features easy access to Interstate 75 and U.S. 411, as well as direct rail service to Savannah.
- The facility has a capacity of 50,000 containers per year. A 10-year development plan will then double that capacity.

CARGO OWNERS

Contact ocean carriers for through bill of lading to/from ARP.

MOTOR CARRIERS

- **TWIC CARD** not required for entry. Drivers and trucking firms must register and comply with UIIA guidelines.
- **ONSITE** staff will assist drivers.
- **CHASSIS POOL** and M&R services at near-terminal site.
- Designated start/stop site for South Atlantic Chassis Pool
- Designated Container Yard (CY)

TERMINAL SPECIFICATIONS

- **TRACK:** 3 working tracks totaling 6,000 feet
- **STORAGE:** Import/export capacity 2,365 TEUs
- **GATES:** 1 Inbound with kiosk
1 Outbound with kiosk
- **HANDLING EQUIPMENT:** 3 eRTG cranes working 3 tracks. Containers stacked 6 wide, 5 high

IN-BOND SHIPMENTS

By U.S. Customs and Border Protection regulations, import loaded containers may depart Savannah and move in-bond to the Appalachian Regional Port under appropriate carrier's bond. In-bond shipments may be cleared at a CBP port of entry, bonded warehouse, or Foreign Trade Zone designated facility. In-bond shipments will not be cleared by CBP at the Appalachian Regional Port.

TERMINAL GATE HOURS:

OPEN FOR RECEIPT/PICK-UP
OF CONTAINERS
7:00 A.M. - 6:00 P.M.
MONDAY-FRIDAY
(*CLOSING 5 P.M. WEDNESDAYS)

TRAIN SCHEDULE:

EVERY OTHER DAY TO AND
FROM THE APPALACHIAN
REGIONAL PORT
•
THIRD DAY AVAILABILITY

STORAGE:

LOADS: DAY OF ARRIVAL PLUS
5 CALENDAR DAYS
•

EMPTY: DAY OF ARRIVAL
PLUS 10 CALENDAR DAYS

SERVICE

Shippers will have the same access to GPA's award-winning Client Relations Center for all service inquiries.

Email: customerservice@gaports.com

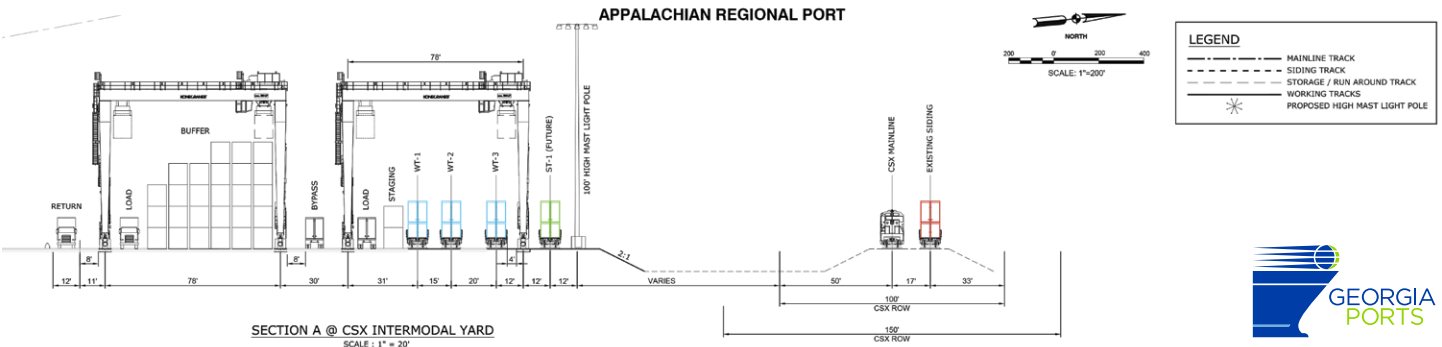
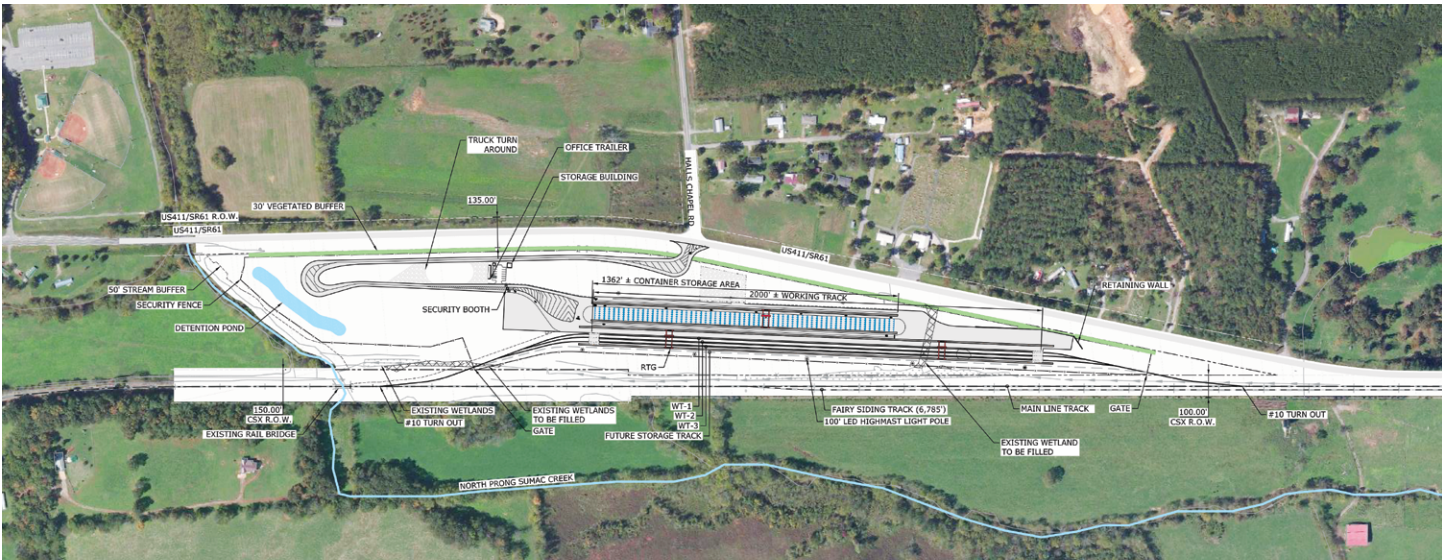
Call: 912.963.5526

VISIBILITY

Cargo interests will have visibility into when cargo loads to rail, arrival in Chatsworth or Savannah, and availability for pick-up via webaccess.gaports.com.



MID-SOUTH: A BETTER OPTION FOR NORTHWEST GEORGIA, ALABAMA, TENNESSEE AND KENTUCKY



Appalachian Regional Port • 8746 U.S. Highway 411 North • Crandall, GA 30711

BCO SALES

CHRIS LOGAN

Senior Director Trade Development, BCO Sales

Call Direct: 912.963.6995

clogan@gaports.com

DAVID PORTER

Regional Sales Manager, Southeastern U.S.

Call Direct: 912.963.5593

dporter@gaports.com

GREG VAN BRUNT

Regional Sales Manager, Midwestern U.S.

Call Direct: 912.963.6996

gvanbrunt@gaports.com

TOM WYVILLE

Regional Sales Manager, Northeastern U.S.

Call Direct: 848.404.9162

twyville@gaports.com

BILL BARRS

Regional Sales Manager, Trade Development

Call Direct: 912.964.3808

bbarrs@gaports.com

OCEAN CARRIER SALES

BRUCE KUZMA

Senior Director Trade Development, Ocean Carrier & Non-Container Sales

Call Direct: 912.964.3854

bkuzma@gaports.com

HERMAN J. BROWN JR.

Regional Sales Manager, Trade Development

Call Direct: 912.964.3809

hbrown@gaports.com

GREG W. CIGGELAKIS

Regional Sales Manager, Trade Development

Call Direct: 732.549.8100

gciggelakis@gaports.com

ECONOMIC DEVELOPMENT

JOHN PETRINO

Director of Business Development

Call Direct: 912.964.3881

jpetrino@gaports.com

STACY WATSON

General Manager, Economic & Industrial Development

Call Direct: 912.964.3879

swatson@gaports.com

gaports.com 

Georgia Ports Authority 

@GaPorts 

Georgia Ports Authority 

Georgia Ports 

ga_ports 

MOTOR CARRIER CONTACTS

AVERITT EXPRESS

423.855.0320

CMC LOGISTICS

912.964.9940

DELTA TRANSPORTATION

423.551.3430

KENNESAW TRANSPORTATION

800.443.0768

LANDSTAR RANGER INC.

706.229.3883

SIERRA EXPRESS

706.517.0794

TCW

706.913.8181

TRANCO LOGISTICS

423.822.1000

U.S. XPRESS, INC.

866.646.5886

